

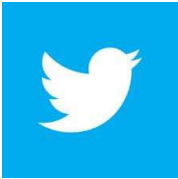
Need more information?

Please contact the midwife at your GP surgery for more detailed information around services provided in West Berkshire and the Royal Berkshire Hospital.

Social media



www.facebook.com/Royal-Berkshire-RBFT-Maternity



www.twitter.com/RBFTmaternity



www.readingmaternityvoices.org.uk



Download the Bounty App for more information

This document can be made available in other languages and formats upon request.

Maternity Services, April 2018

Review due: April 2020

Did you know we have a dedicated Homebirth team?

We offer a case-loading model of midwifery care to women wishing to have their baby at home. If you are interested in having a homebirth or just want to ask a few questions, please contact your community midwife who can refer you to our team for care.

Alternatively, you can drop us an email with questions or self-refer directly to our email address: rbft.homebirthteam@nhs.net.



Royal Berkshire NHS Foundation Trust
London Road, Reading RG1 5AN
Telephone 0118 322 5111
www.royalberkshire.nhs.uk



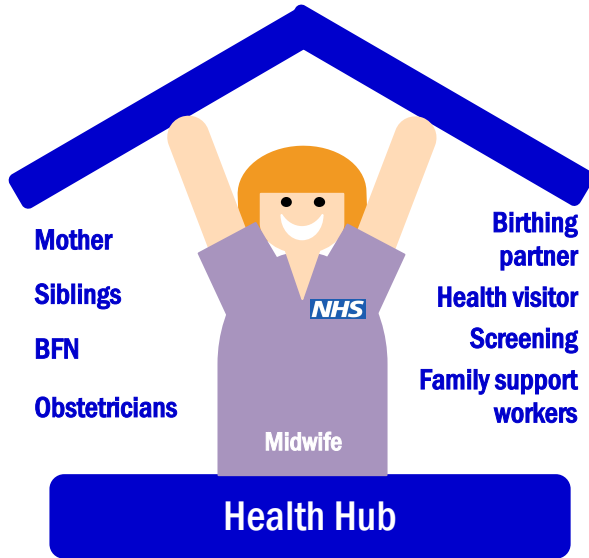
Royal Berkshire
NHS Foundation Trust

Midwifery Services in West Berkshire



Congratulations on your pregnancy!

The first decision you need to make is where to have your baby.



The Royal Berkshire Hospital Maternity Service provides one to one care to 5,800 women a year, either at home, the midwifery led unit or delivery suite, but what else can we offer?

The community midwifery team provides a seven day service to mothers and babies, at either GP surgeries, West Berkshire Community Hospital or at your home – we are split into three small teams:

Rose



Fuchsia



Jasmine



Care in the community

Each midwifery team will be able to offer antenatal and postnatal care at your choice of location, making it easy for you to access our services. A midwife will book your pregnancy, making a care plan with your family to ensure we provide you individualized care that suits you and your family.

Services for women living in West Berks

- Ultrasound service– 3 times a week at WBCH.
- Dedicated team of midwives and maternity support workers providing flexible antenatal and postnatal care.
- Consultant appointments– held once a week at WBCH.
- Hearing screening for your baby.
- Breastfeeding Network (BFN) support.
- Blood tests at your GP or WBCH.
- Dedicated homebirth team, who will provide all your care at home.
- Free NCT classes (birth preparation classes).
- Antenatal infant feeding support classes – giving you the skills and knowledge to prepare for the birth of your baby.
- Dedicated service for women with complex social needs.
- Access to physiotherapy services at WBCH.
- A specialist perinatal mental health service in your local area.

- Interaction from the health visiting team before you have your baby, making the smooth transition from midwifery care to the health visiting service.

Care in the Royal Berkshire Hospital



- One to one care in labour.
- Rushey (midwifery led unit).
- Several birthing pools.
- Delivery suite (obstetric led unit).
- Infant feeding team.
- Free NCT classes.
- Dedicated parking in labour.
- Concessionary parking.
- Ultrasound services– weekly five day service.
- Consultant appointments.
- Homebirth service.
- Consultant midwifery service.

